

# 8CH MULTI-FORMAT VIDEO SWITCHER MS-8

For Video Conference & Presentation



The introduction of an unparalleled switchable converter.





## Pick a video you want to watch - anytime.

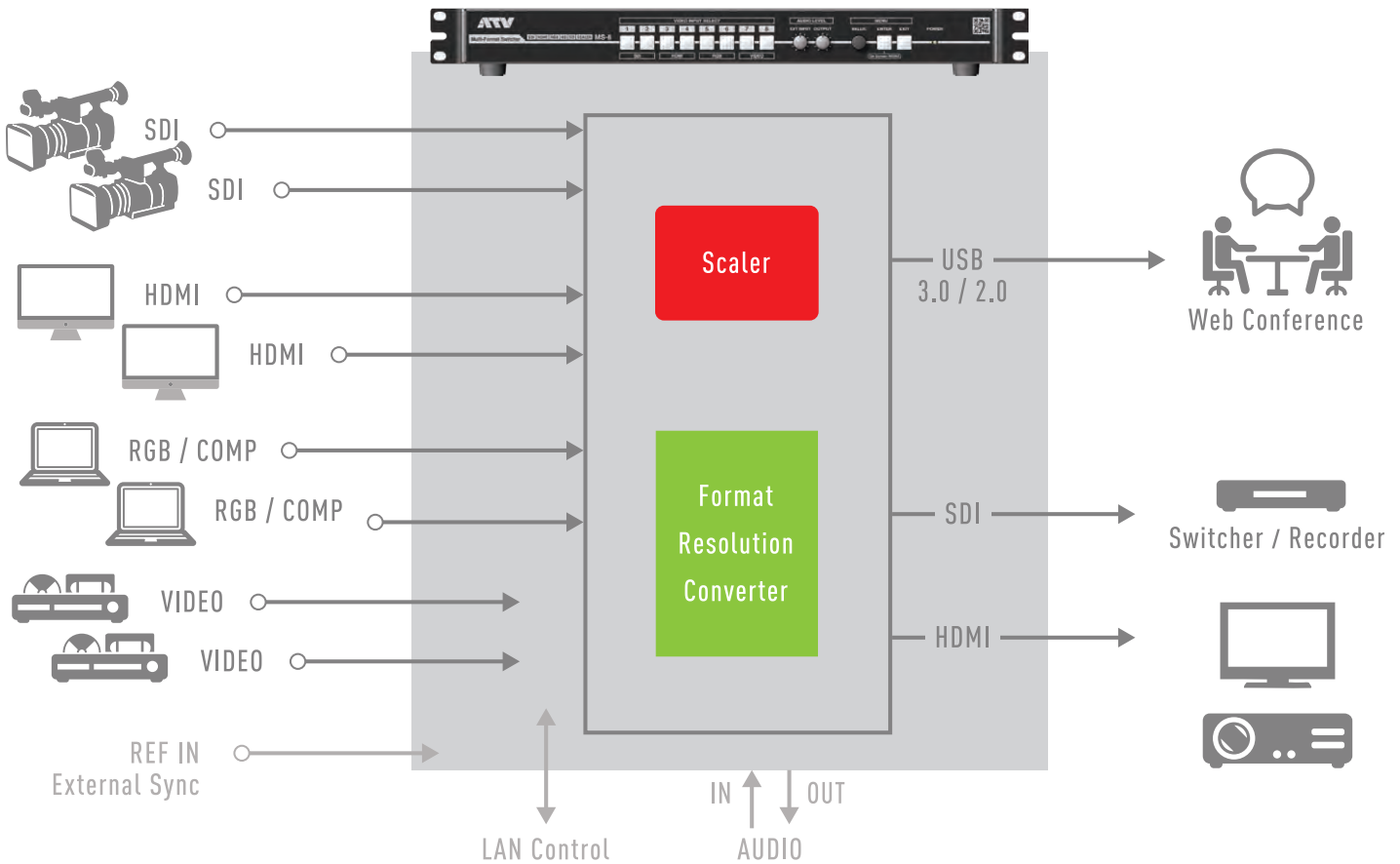
For a teleconference or a presentation, you may need to handle video outputs from PCs of different resolutions as well as audio-visual contents from cameras.

On such occasions, poor practices such as taking an inordinately long time to connect/disconnect cables or failure to show an intended video promptly could give a negative impression to, for example, business partners or potential customers. MS-8, a simple switcher equipped with the same built-in scaler as an A-PRO-4, can eliminate such potential situations.

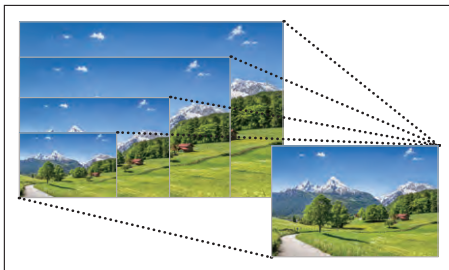
All you have to do is to connect all the video sources to the MS-8 unit and then you can switch between them just by pressing respective buttons as needed. Even if connected video sources are of heterogeneous formats, the built-in scaler optimally manages them to present all the visual contents. The unit is equipped with two-channel stereo inputs for external audio input. The USB terminals can output streams for live video streaming.



## MS-8 SYSTEM CONCEPT

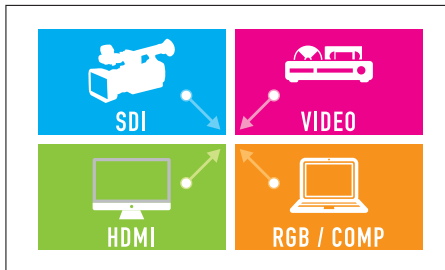


## MS-8 FEATURES & PERFORMANCE



### Multi-format support

The built-in scaler converts all video input signals into an optimal format.



### Diverse input terminals

Two inputs are provided for SDI, HDMI, analog RGB, analog and composite connectivity, respectively.



### USB 3.0 output

USB 3.0 terminals are ready for high-definition video and audio stream output suited for live streaming.



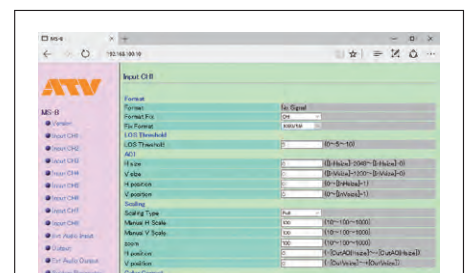
### 10-bit/4:4:4 processing for up to 2K/60P

Resolutions up to 2048x1080/60P are supported for video input. Processing at 10-bit/4:4:4 realizes clear video output with no color bleeding.



### External synchronization support

The unit can be integrated into an existing system as a sub-switcher via a reference input.

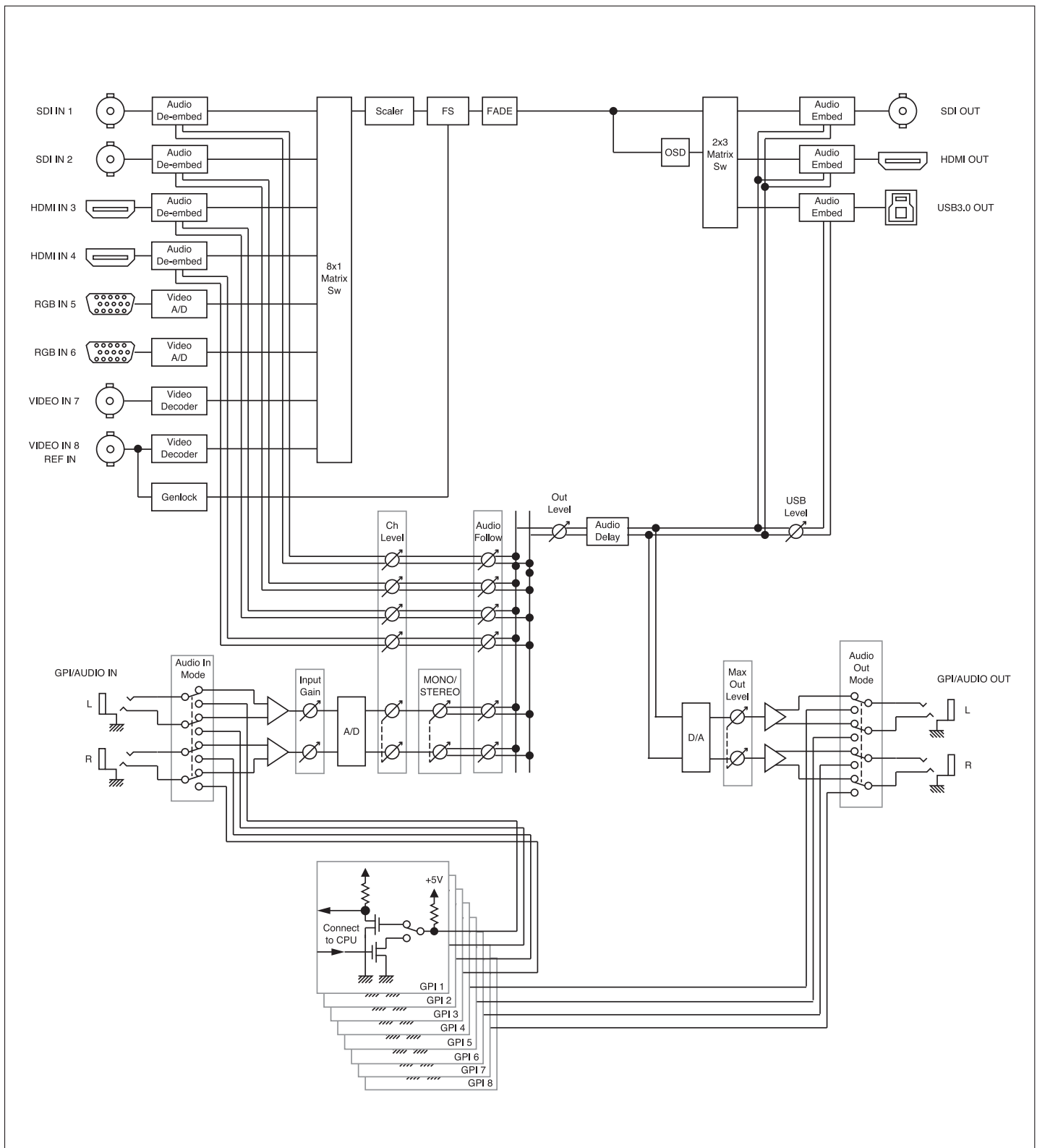


### Supporting a wide range of external controls

You can modify parameters through a web browser interface on your PC/Mac. GPI IN/OUT is also supported.

## MS-8

## BLOCK DIAGRAM





**Input Connectors : SDI IN**

Connector	BNC type x 2
Signal Standards	SMPTE ST2081 SMPTE ST424 (SMPTE ST425-AB) SMPTE ST292 SMPTE ST259-C
Video Format	2048x1080/60p/59.94p/50p/48p/47.95p/30p/29.97p/25p/24p/23.98p/ 30FsF/29.97PsF/25PsF/24PsF/23.98PsF (Conforms to SMPTE ST2048) 1920x1080/60p/59.94p/50p/30p/29.97p/25p/24p/23.98p/ 60i/59.94i/50i/30PsF/29.97PsF/25PsF/24PsF/23.98PsF (Conforms to SMPTE ST274) 1280x720/60p/59.94p/50p/30p/29.97p/25p/24p/23.98p (Conforms to SMPTE ST296) 720x480/59.94i, 720x576/50i (Conforms to BT.656-3/5)
Color Format	10 bits YCC4:2:2, 12 bits YCC/RGB4:4:4, 10 bits RGBA/YCCA4:4:4:4, 12 bits YCCA4:2:2:4
Audio Format	Linear PCM, 24/20 bits, 48 kHz, 16 ch (Conforms to SMPTE ST299, ST272-C)

**Input Connectors : HDMI IN**

Connector	Type A (19 pins) x 2
Signal Standards	HDMI1.4
Video Format	2048x1080/60p/59.94p/50p/48p/47.95p/30p/29.97p/25p/24p/23.98p (SMPTE ST2048 Timings) 1920x1080/60p/59.94p/50p/60i/59.94i/50i/30p/29.97p/25p/24p/23.98p, 1280x720/60p/59.94p/50p, 720x480/59.94p, 720x576/50p, 720(1440)x480/59.94i, 720(1440)x576/50i (Conforms to CEA-861-F) 640x480/60/72/75/85, 800x600/56/60/72/75/85, 1024x768/60/70/75/85, 1152x864/75, 1280x768/60/75/85, 1280x800/60/75/85, 1280x960/60/85, 1280x1024/60/75/85, 1360x768/60, 1400x1050/60/75, 1440x900/60/75/85, 1600x1200/60, 1680x1050/60, 1920x1200/60 Reduced Blanking(Conforms to VESA DMT)
Color Format	10/12 bits YCC4:2:2, 8/10/12 bits YCC/RGB4:4:4
Audio Format	Linear PCM, 16--24 bits, 32--48 kHz, 2--8 ch

**Input Connectors : RGB COMPONENT IN**

Connector	HD-15 type x 2
Signal Standards	VESA VSIS, SMPTE ST274/ST296, ITU-R BT.1358-1, EBU N10
Video Format	1920x1080/60p/59.94p/50p/60i/59.94i/50i/30PsF/29.97PsF/25PsF/24PsF/ 23.98PsF (Conforms to SMPTE ST274), 1280x720/60p/59.94p/50p (Conforms to SMPTE ST296), 720x480/59.94p, 720x576/50p (Conforms to ITU-R BT.1358-1), 720x480/59.94i, 720x576/50i (Conforms to EBU N10), 640x480/60/72/75/85, 800x600/56/60/72/75/85, 1024x768/60/70/75/85, 1152x864/75, 1280x768/60/75/85, 1280x800/60/75/85, 1280x960/60/85, 1280x1024/60/75/85, 1360x768/60, 1400x1050/60/75, 1440x900/60/75/85, 1600x1200/60, 1680x1050/60, 1920x1200/60 Reduced Blanking (Conforms to VESA DMT)

**Input Connectors : REF IN**

Connector	BNC type x 1
Signal Standards	B.B. (SMPTE ST318), Bi-Level (ITU-R BT.1358-1), HD Tri-Level (SMPTE ST274, ST296)
Video Format	1920x1080/59.94p/50p/59.94i/50i (Conforms to SMPTE ST274) 1280x720/59.94p/50p (Conforms to SMPTE ST296) 720x480/59.94p, 720x576/50p (Conforms to ITU-R BT.1358-1) 720x480/59.94i, 720x576/50i (Conforms to SMPTE ST318)

**Input Connectors : VIDEO IN**

Connector	BNC type x 2
Signal Standards	ITU-R BT.470-6
Video Format	NTSC, NTSC-J, PAL

**Input Connectors : AUDIO IN**

Connector	1/4" TRS phone type (balanced) x 2
Input Level	-30--+4 dBu
Maximum Input Level	+24 dBu
Impedance	150 k / 600 ohms selectable

\* 0dBu=0.775Vrms

\* In the interest of product improvement, the specifications and/or appearance of this unit are subject to change without prior notice.

**Output Connectors : SDI OUT**

Connector	BNC type x 1
Signal Standards	SMPTE ST2081 SMPTE ST424 (SMPTE ST425-AB) SMPTE ST292 SMPTE ST259-C
Video Format	2048x1080/59.94p/50p/29.97p/25p/24p/23.98p (Conforms to SMPTE ST2048) 1920x1080/59.94p/50p/29.97p/25p/24p/23.98p/59.94i/50i (Conforms to SMPTE ST274) 1280x720/59.94p/50p (Conforms to SMPTE ST296) 720x480/59.94i, 720x576/50i (Conforms to ITU-R BT.656-5))
Color Format	10bit YCC4:2:2, 12bit YCC/RGB4:4:4 (Valid bits are 10 bits)
Audio Format	Linear PCM, 24/20 bits, 48 kHz, 2 ch (Conforms to SMPTE ST299, ST272-C)

**Output Connectors : HDMI OUT**

Connector	Type A (19 pins) x 1
Signal Standards	HDMI1.4
Video Format	2048x1080/59.94p/50p/29.97p/25p/24p/23.98p (SMPTE ST2048 Timings) 1920x1080/59.94p/50p/29.97p/25p/24p/23.98p/59.94i/50i, 1280x720/59.94p/50p, 720x480/59.94p, 720x576/50p, 720(1440)x480/59.94i, 720(1440)x576/50i (Conforms to CEA-861-F)
Color Format	10 bits YCC4:2:2, 8/10 bits YCC/RGB4:4:4
Audio Format	Linear PCM, 24 bits, 48 kHz, 2 ch

**Output Connectors : USB3.0 OUT**

Connector	USB Type B (Super Speed USB) x 1
Standards	USB 3.0 Super Speed (SS) / USB 2.0 High Speed (HS)
Video Format	USB Video Class 1.1, USB Audio Class 1.0 (SS) 2048x1080/59.94p/50p/29.97p/25p/24p/23.98p, 1920x1080/59.94p/50p/29.97p/25p/24p/23.98p/59.94i/50i, 1280x720/59.94p/50p, 720x480/59.94p, 720x576/50p, (HS) 720x480/59.94i, 720x576/50i
Color Format	720x480/59.94i, 720x576/50i
Audio Format	8 bits YCC4:2:2 Linear PCM, 16 bits, 48 kHz, 2 ch

**Output Connectors : AUDIO OUT**

Connector	1/4" TRS phone type (balanced) x 2
Output Level	-20--+4 dBu
Max Output Level	+24 dBu
Min Load Impedance	20k ohms

**Processing**

Video Processing	10 bits YCC4:4:4
Audio Processing	24 bits 48 kHz

**Other Connectors**

USB2.0 Connector	Micro USB Type B (Hi-Speed USB) x 1
Standards	USB 2.0 High Speed (HS)
LAN Connector	RJ45 (10/100 Base-T)
DC IN	Power Voltage : 12~20 V, Power Consumption : 35 W

**Others**

Dimensions	16-13/16 (W) x 9 (D) x 2-3/16 (H) inches
Weight	2.7 kg, 6 lbs (without AC adaptor & AC cord & Rack mount brackets & Screws)
Operation Temperature	+0--+40 degrees Celsius, +41--+104 degrees Fahrenheit
Accessories	AC adaptor, Startup Manual, Rack mount brackets x 2, Screws x 6, Electrical power cords x 5 (for Japan, North America, UK, EU and Australia)